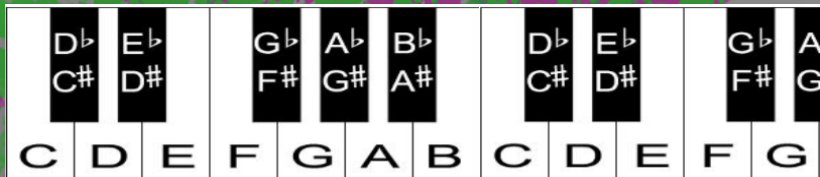


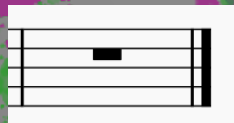
# PERFORMING

Music is: “organised sound”  
(*Repetition vs Variation*)

## Key Guide

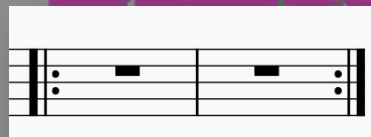


## Bar lines and repeats



Empty bar

← Stop



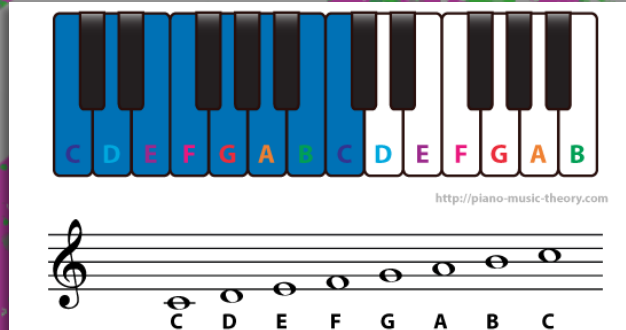
Repeat/loop

## Pitch

Sharps raise the pitch  
Flats lower the pitch



## The C major scale



## Tonality

Major = 😊

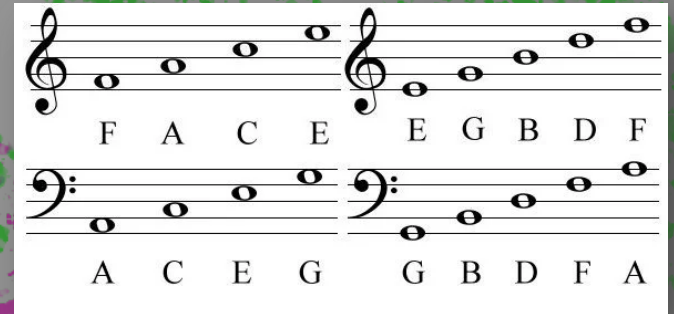
Minor = 😞

Diminished = 😬

## Clefs and notes on the staff

Treble clef

Bass clef



## Dynamics

piano	<i>p</i>	soft
pianissimo	<i>pp</i>	very soft
forte	<i>f</i>	loud
fortissimo	<i>ff</i>	very loud
mezzo piano	<i>mp</i>	medium soft
mezzo forte	<i>mf</i>	medium loud
crescendo	<i>cresc.</i> <	gradually louder
diminuendo	<i>dim.</i> >	gradually softer

## Instrument families:



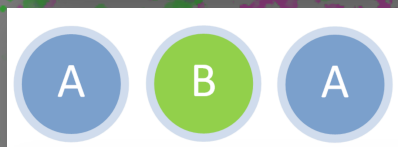
Brass, Woodwind, Strings,  
Keyboards, Percussion

# COMPOSING

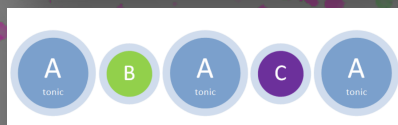
## Form and Structure



= Binary Form



= Ternary Form



= Rondo Form

## Time Signatures



Semibreve

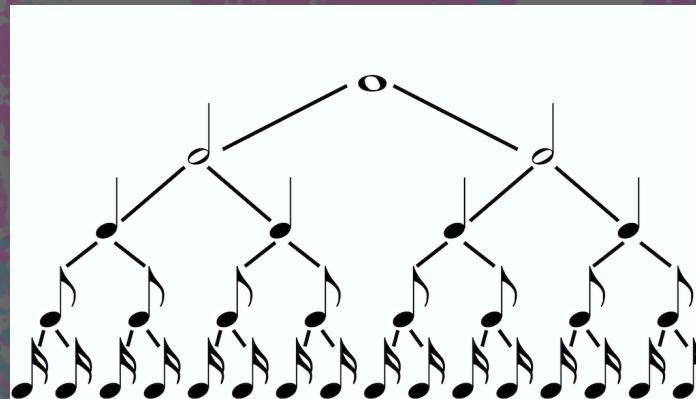
Minim

Crotchet

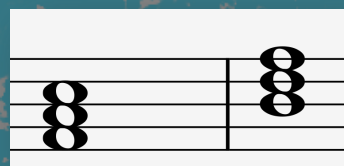
Quaver

Semi-quaver

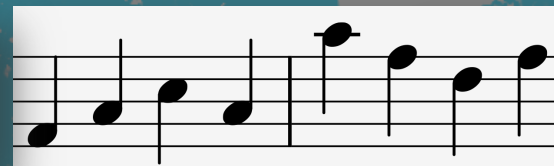
## Note values



Block chords,  
(triads)



Broken chords,  
(arpeggios)



ascending/descending/alternating

## TEMPO MARKINGS

**Larghissimo** — very, very slow (20 bpm and below)

**Grave** — slow and solemn (20–40 bpm)

**Lento** — slowly (40–60 bpm)

**Largo** — broadly (40–60 bpm)

**Larghetto** — rather broadly (60–66 bpm)

**Adagio** — slow and stately (literally, "at ease") (66–76 bpm)

**Adagietto** — rather slow (70–80 bpm)

**Andante moderato** — a bit slower than andante

**Andante** — at a walking pace (76–108 bpm)

**Andantino** — slightly faster than andante

**Moderato** — moderately (108–120 bpm)

**Allegretto** — moderately fast (but less so than allegro)

**Allegro moderato** — moderately quick (112–124 bpm)

**Allegro** — fast, quickly and bright (120–168 bpm)

**Vivace** — lively and fast (≈140 bpm) (quicker than allegro)

**Vivacissimo** — very fast and lively

**Allegro** — very fast

**Presto** — very fast (168–200 bpm)

**Prestissimo** — extremely fast (more than 200bpm)

Ritardando

Accelerando