



# **Ramsey Gatehouse**

## **Sixth Form**

PROSPECTUS 2023/24

Let us open the door to your future

There are many different leadership roles available, many of which involve working with the lower school such as subject ambassadors and prefects.

**JACOB CALVER**  
HEAD STUDENT



**ACHIEVE YOUR**

# AMBITIONS

It is a pleasure to be a student here as the staff always offer us opportunities and prioritise our learning journey.

**MARY KIRTON**  
HEAD STUDENT



Ramsey Gatehouse Sixth Form builds on our impressive track record of securing high levels of attainment and supporting students into higher education and employment.

At Ramsey Gatehouse Sixth Form, your learning experience is tailored to you, with an ever-expanding mix of academic and vocational subjects to suit your needs and interests.

Learn in the way that best suits you; whether that's working in our upgraded sixth form areas, collaborating in our vibrant Study6 café, or studying at home.

Our refurbished study area provides a vibrant area for learning within which students can use their own devices or our modern ICT facilities.

**WHATEVER THEY MAY BE**





I'm so proud to be part of this incredible Sixth Form and I know that when you join us, you will feel the same way.

**SAMANTHA MOORE**

HEAD OF SIXTH FORM



We've built a bespoke specialist team of sixth form tutors, dedicated careers team and UCAS experts to ensure you reach your potential.

From assistance with the cost of transport to supporting you to buy your own device for study, we're here to help those that need it.

Our students are confident, diverse young adults who are willing to work hard to achieve their ambitions, whatever they may be.

They are leaders in their local community, taking every opportunity to develop the skills they need for the future.

Ramsey Gatehouse Sixth Form is the heart of Abbey College; a place our students aspire to reach.

Let us open the door to your future.

**A CLOSE-KNIT**

# COMMUNITY

**WITH A STRONG HISTORY**

A-Levels and BTECs are difficult, but the support we receive from the Sixth Form Team is immense.



**JACOB CALVER**

HEAD STUDENT







# COURSES

COURSE NAME	QUALIFICATION	ENTRY REQUIREMENTS
Art	A Level	Grade 6 in Art
Biology	A Level	Grade 7 in Biology or 7-7 in trilogy, grade 6+ in Maths and English
Chemistry	A Level	Grade 7 in Chemistry or 7-7 in Trilogy, grade 6+ in Maths and English
Drama and Theatre	A Level	Grade 5 or above in English and GCSE in Drama desirable
Economics	A Level	Grade 6 in Maths
English Literature	A Level	Grade 6 in English Literature
Further Maths	A Level	Grade 8 in Maths
Geography	A Level	Grade 6 in Geography
History	A Level	Grade 6 in History
Law	A Level	Grade 6 in English
Maths	A Level	Grade 7 in Maths
Philosophy and Ethics	A Level	Grade 6 in MO
Physics	A Level	Grade 7 in Physics or 7-7 in Trilogy, grade 6+ in Maths and English
Politics	A Level	Grade 6 in English
Psychology	A Level	Grade 6 in English, Maths and Science (Biology if Trilogy)
Sociology	A Level	Grade 6 in English
Spanish	A Level	Grade 6 in Spanish
Business	A Level/BTEC	Merit in Business
Music Performance	BTEC	Grade 5 or above in Music plus a grade 4 in an instrument
Health & Social Care	BTEC	Merit in Health and Social Care
Engineering	BTEC	Merit in Engineering
ICT	BTEC	Merit or Grade 5
Sports Studies	BTEC	Merit in Sports Studies
Core Maths	AS equivalent	Grade 6 in Maths
Criminology	Applied Diploma	Grade 5 in English
EPQ	AS equivalent	Average point score 6+

Subjects have their own specific requirements as outlined in the table above. Students are offered places on the basis of their predicted grades.

All students who wish to join Ramsey Gatehouse Sixth Form must meet a minimum entry requirement of five GCSEs at grade 5 or above, including English and Maths.

# HOW TO APPLY



To make an appointment to visit the Sixth Form or for any further information, please telephone **01487 811766** or email: **office@ramseygatehouse.co.uk**

# WHERE DID OUR STUDENTS GO FROM HERE?

## 1 Anglia Ruskin University

Primary Education Studies  
Finance with Economics  
Criminology  
Forensic Science (with placement year)  
Crime and Investigative Studies  
Biomedical Science (with placement year)  
Software Development  
Fashion Design  
Sport and Exercise Science (with placement year)  
Accounting and Finance  
Social Work  
Sport and Exercise Science  
Computer Games Art (with placement year)  
Primary Education Studies  
Drama  
Business and Management

## 2 Bournemouth University

Ecology and Wildlife Conservation  
Sport Coaching

## 3 Imperial College London

Physics

## 4 Leeds Arts University

Fashion Design

## 5 Leeds Beckett University

Counselling and Mental Health

## 6 Loughborough University

Sport and Exercise Science (with placement year)

## 7 Northumbria University, Newcastle

Law/MLaw

## 8 Nottingham Trent University

Criminology  
Politics  
Business Management and Marketing

## 9 SOAS University of London

Korean and Global Development

## 10 Swansea University

History

## 11 The University of Edinburgh

Illustration

## 12 UCL (University College London)

Chemistry

## 13 University Centre Peterborough

English Literature

## 14 University of Bath

Mathematics  
Structural and Architectural Engineering

## 15 University of Cambridge

Engineering  
Psychological and Behavioural Sciences

## 16 University of Durham

Engineering

## 17 University of East Anglia UEA

Psychology

## 18 University of Leeds

Nursing (Adult)

## 19 University of Leicester

History

## 20 University of Lincoln

English and Creative Writing  
Zoology  
Economics

## 20 University of Lincoln (cont'd)

Creative Writing  
Ambulance Clinical Technician Practice  
Sports Business Management  
Sport Development and Coaching  
Business and Management

## 21 University of Nottingham

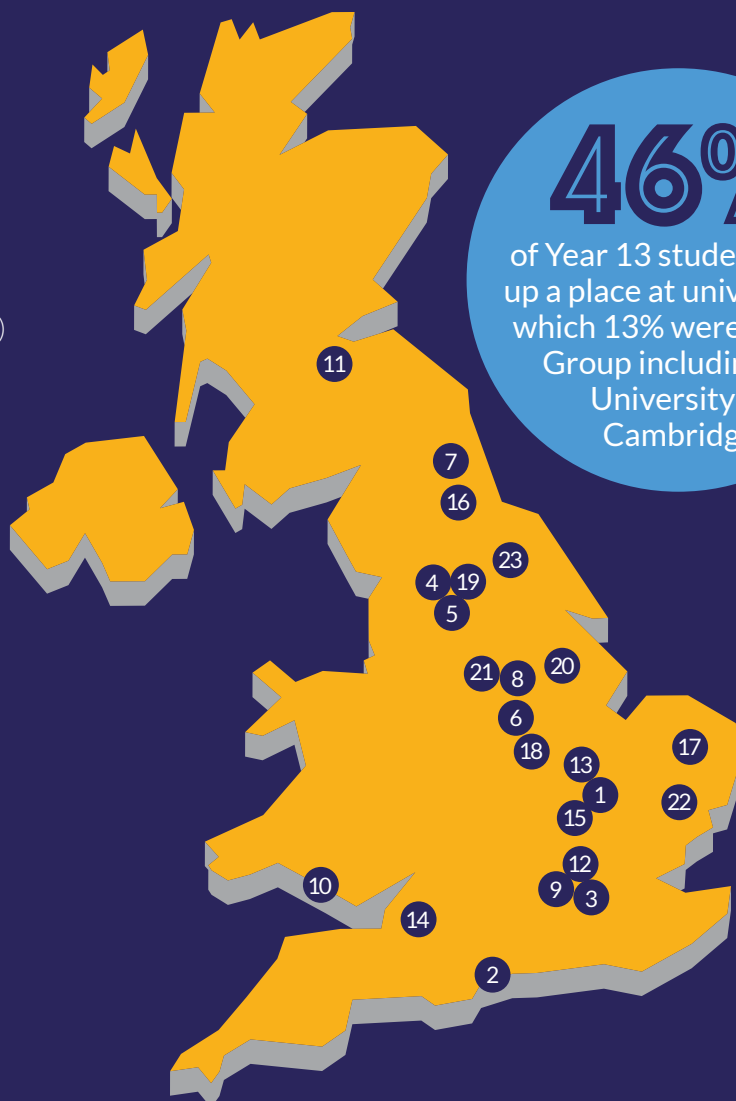
Law  
Geography with Business

## 22 University of Suffolk

Psychology

## 23 University of York

Psychology  
Biomedical Sciences  
Nursing (Adult)



46%

of Year 13 students took up a place at university of which 13% were Russell Group including the University of Cambridge.